

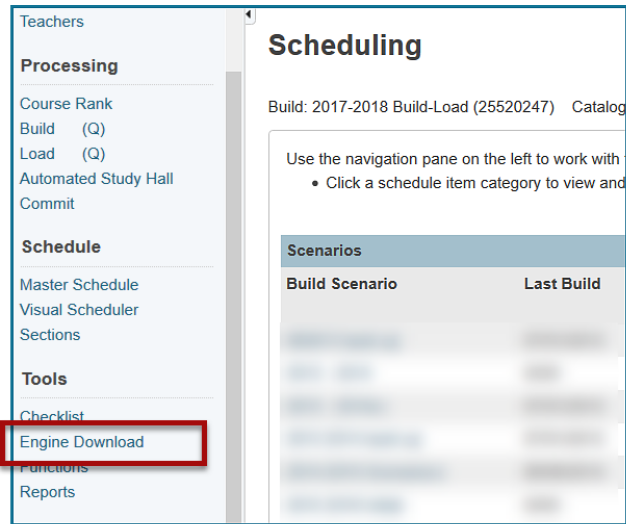
---

# Downloading the Scheduling Engine

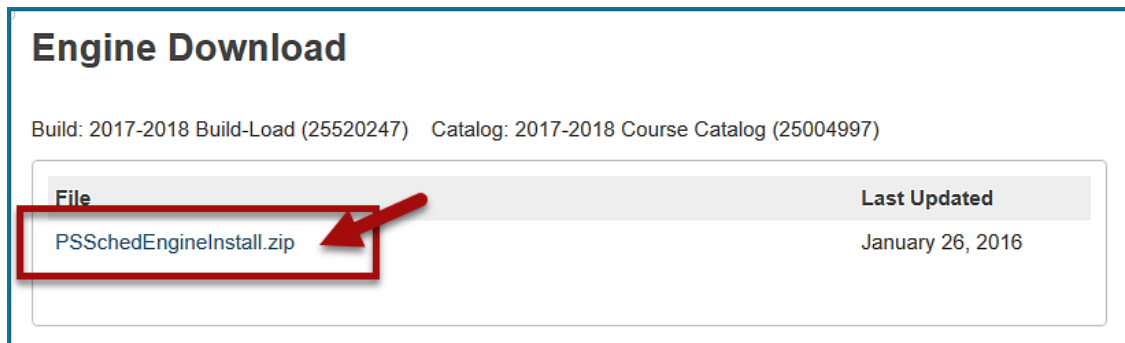
---

**Version 1.0 • May 2, 2017**

1. On the **Start Page**, select **PowerScheduler** under Applications.
2. On the **Scheduling page**, under Tools, choose **Engine Download**.



3. From the **Engine Download page**, Click **PSSchedEngineInstall.ZIP**.



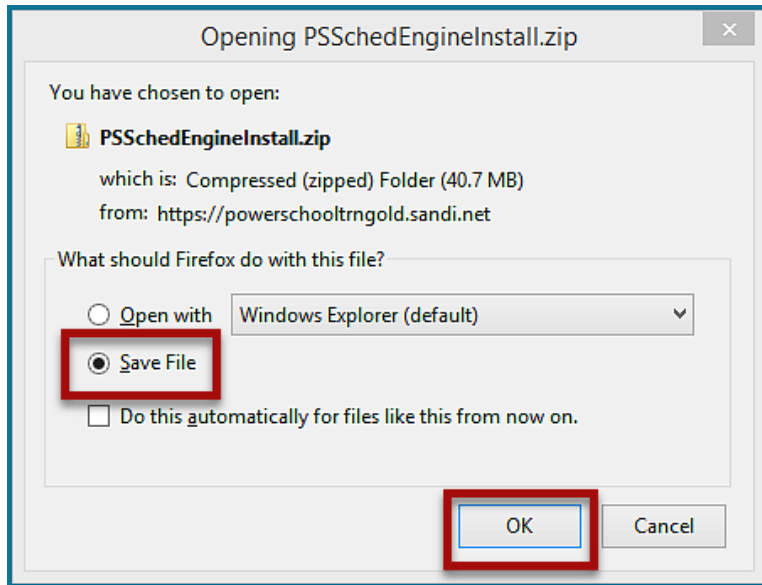
---


The following instructions will vary depending on the browser you are using:

## IF YOU ARE USING FIREFOX

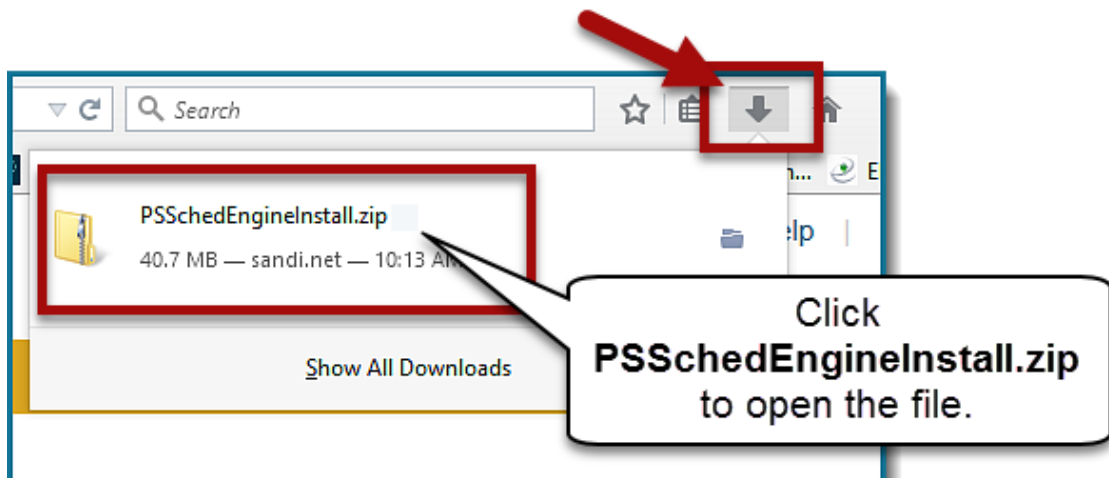
4. Select **Save File**, if it isn't already selected.

Click **OK**.



The download progress will appear in the upper right corner of your browser. A blue arrow  will indicate when the download is complete.

5. Click the **arrow** to open the Download menu, then select **PSSchedEngineInstall.zip** to open the file.



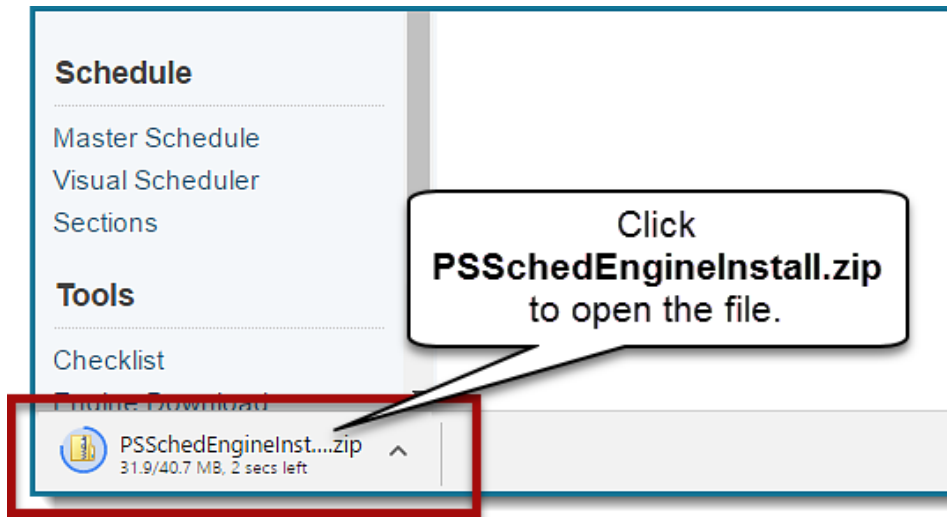
---

## IF YOU ARE USING CHROME

4. You will *not* be prompted to save the zip file, it will automatically save to the Downloads folder on your computer.

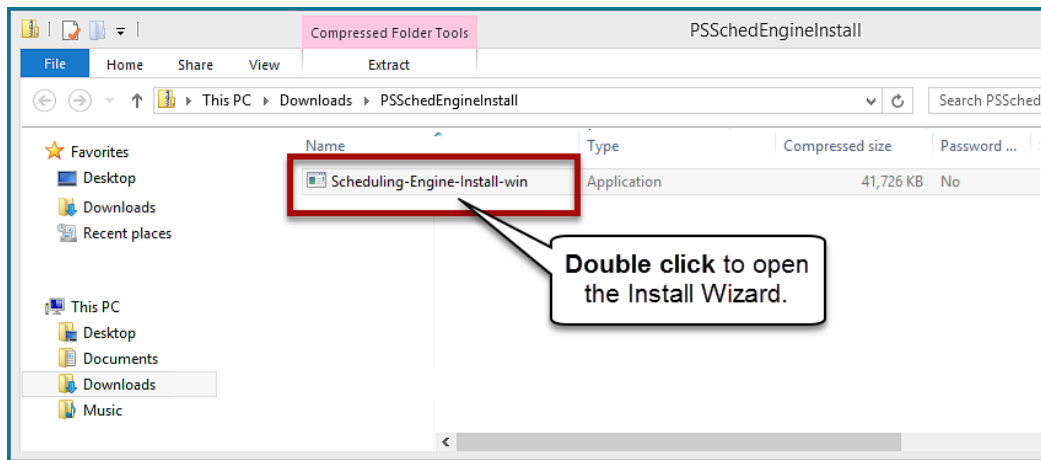
The download progress will appear in the lower left corner of your browser.

5. When the download is complete, click **PSSchedEngineInstall.ZIP** to open the file.



In either Browser, the file will open in the Downloads Folder on your computer.

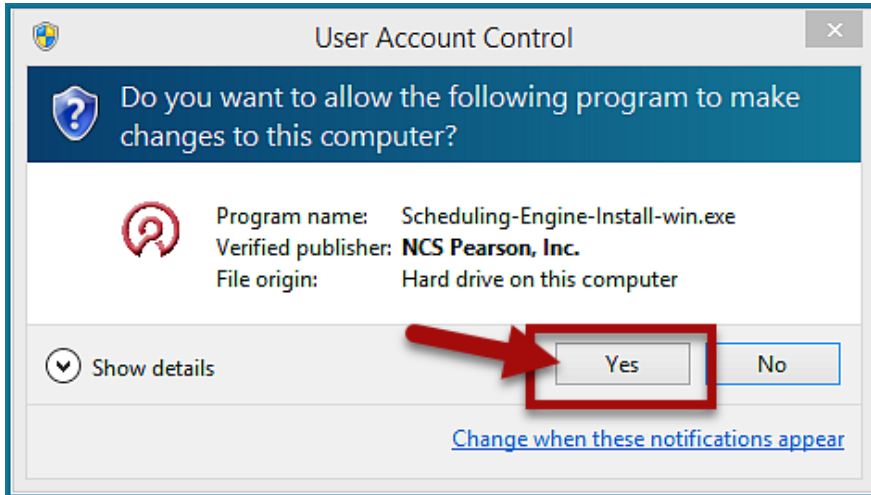
6. Double-click **Scheduling-Engine-Install-win.exe** to open the InstallShield Wizard.



---

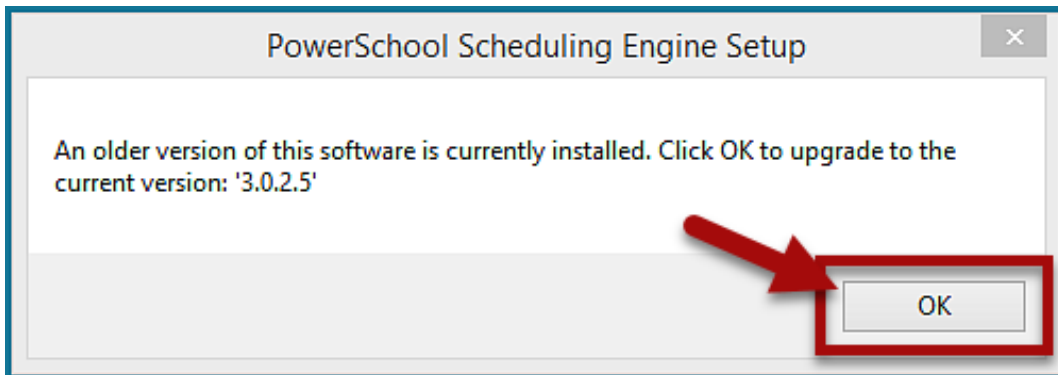
**NOTE:** If you get a **User Account Control pop-up window**, prompting you to allow the program to make changes to your computer.

Click **Yes**.



**NOTE:** If you get a **message advising you that an older version of the Scheduling Engine is currently installed**.

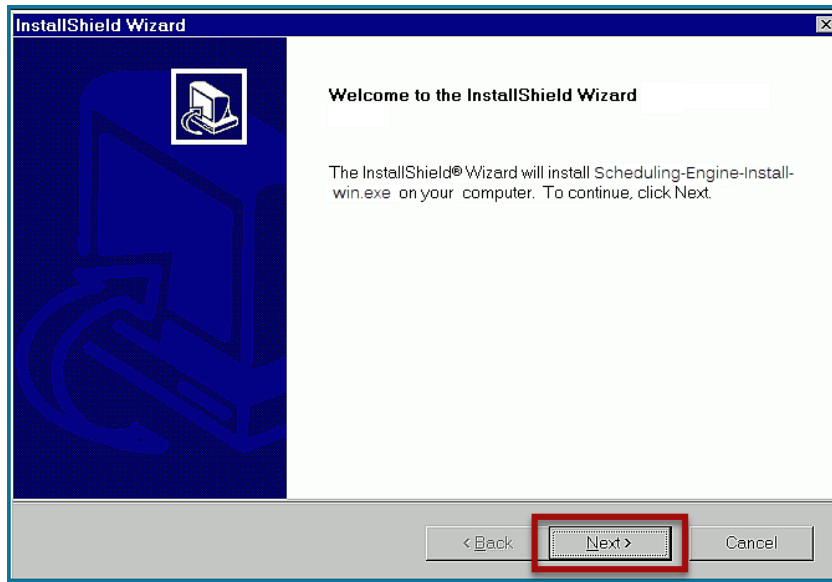
Click **OK** to upgrade to the current version.



---

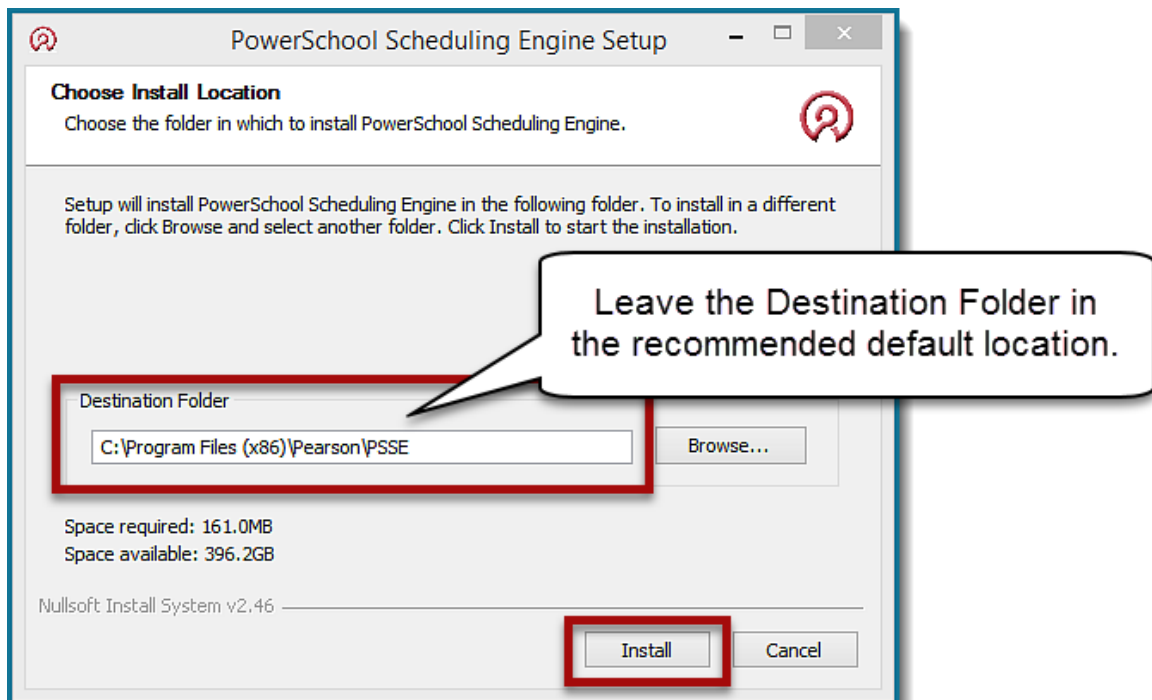
**NOTE:** Or you may be taken directly to the InstallShield Wizard.

Click Next.

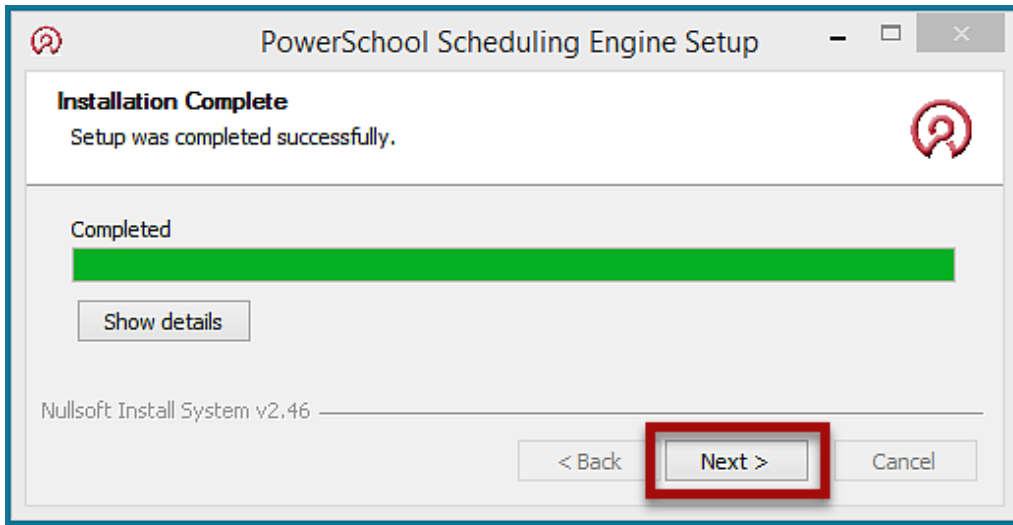


Once you are on the **Choose Install Location** page, leave the Destination Folder in the recommended default location.

7. Click **Install**.



8. When the installation is complete. Click **Next**.



9. Before you click **Finish**, read the "Following the Installation" message.

